



Frosty Hollow

East Hunsbury, Northampton

oriordanbond
SALES & LETTINGS



Frosty Hollow

East Hunsbury
NN4 0SY

Offers Over
£425,000

Offered to the market with no onward chain is this four bedroom detached family home, situated on a corner plot, in this desirable East Hunsbury cul-de-sac. This property offers generous accommodation arranged over two floors.

Entrance porch, hallway with stairs to the first floor, a cloakroom/WC, good size sitting room with patio doors leading to a conservatory, separate dining room, kitchen with integrated oven, hob and extractor and a family room/snug. To the first floor is a light and airy landing with access to the loft space, an airing cupboard, doors to four ample bedrooms with fitted wardrobes to the three largest rooms, an en-suite to the main bedroom and a family bathroom. Outside, the property sits on a corner plot offering a lawned front garden with mature trees and shrubs and a double width driveway leading to an attached garage. To the rear is a south/easterly facing garden which has been landscaped with paved seating areas, lawn, mature planted borders, a summerhouse, pergola and timber fencing to enclose. Further benefits include double glazing and gas radiator heating. (C/1466/S)

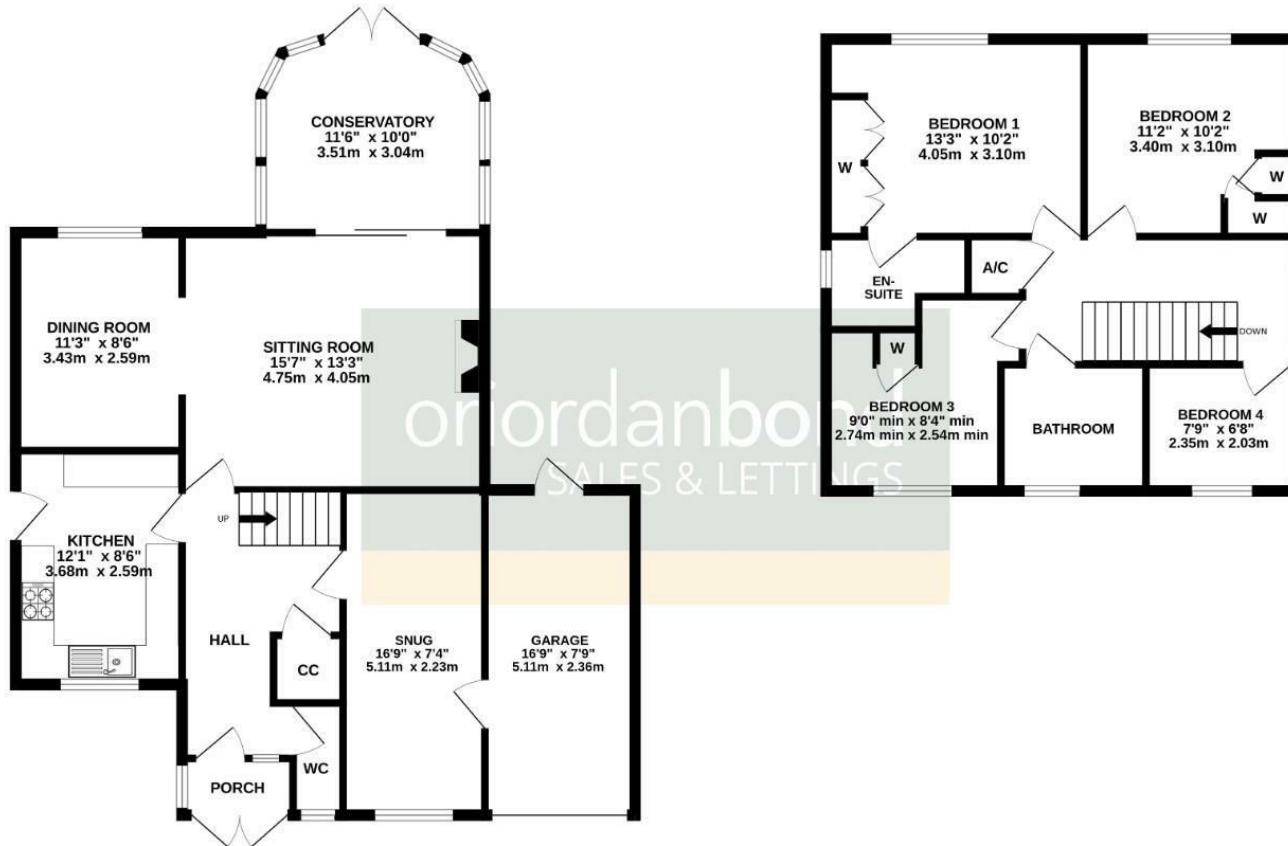
- Four bedroom detached home
- En-suite to master bedroom
- Three reception rooms and conservatory
- Gas radiator heating
- Enclosed south/easterly facing rear garden
- Driveway and garage





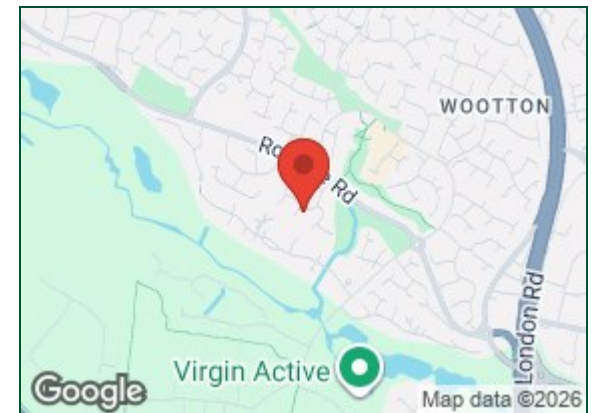
GROUND FLOOR
903 sq.ft. (83.9 sq.m.) approx.

1ST FLOOR
563 sq.ft. (52.3 sq.m.) approx.



TOTAL FLOOR AREA : 1466 sq.ft. (136.2 sq.m.) approx.

Whilst every attempt has been made to ensure the accuracy of the floorplan contained here, measurements of doors, windows, rooms and any other items are approximate and no responsibility is taken for any error, omission or mis-statement. This plan is for illustrative purposes only and should be used as such by any prospective purchaser. The services, systems and appliances shown have not been tested and no guarantee as to their operability or efficiency can be given.
Made with Metropix ©2026



Additional information

- Council Tax Band: E
- Energy Efficiency Rating: D

Viewing

Viewing strictly by appointment – details below

Disclaimer

O’Riordan Bond Estate Agents Limited has not tested apparatus, equipment, fittings or services and so cannot verify they are in working order. The buyer is advised to obtain verification from their solicitor or surveyor.

O’Riordan Bond Hunsbury Sales

01604 706007

hunsbury@oriordanbond.co.uk

